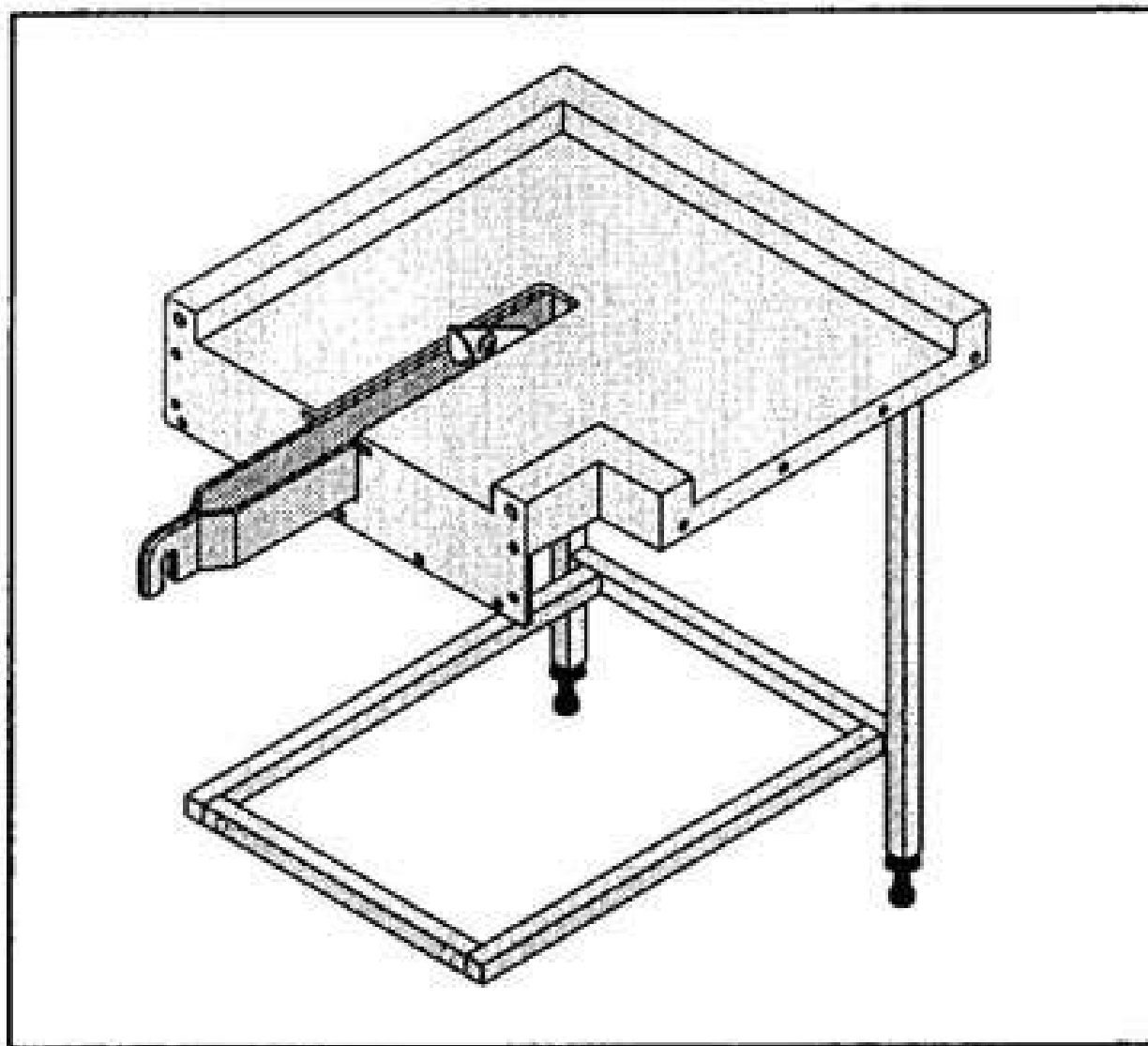
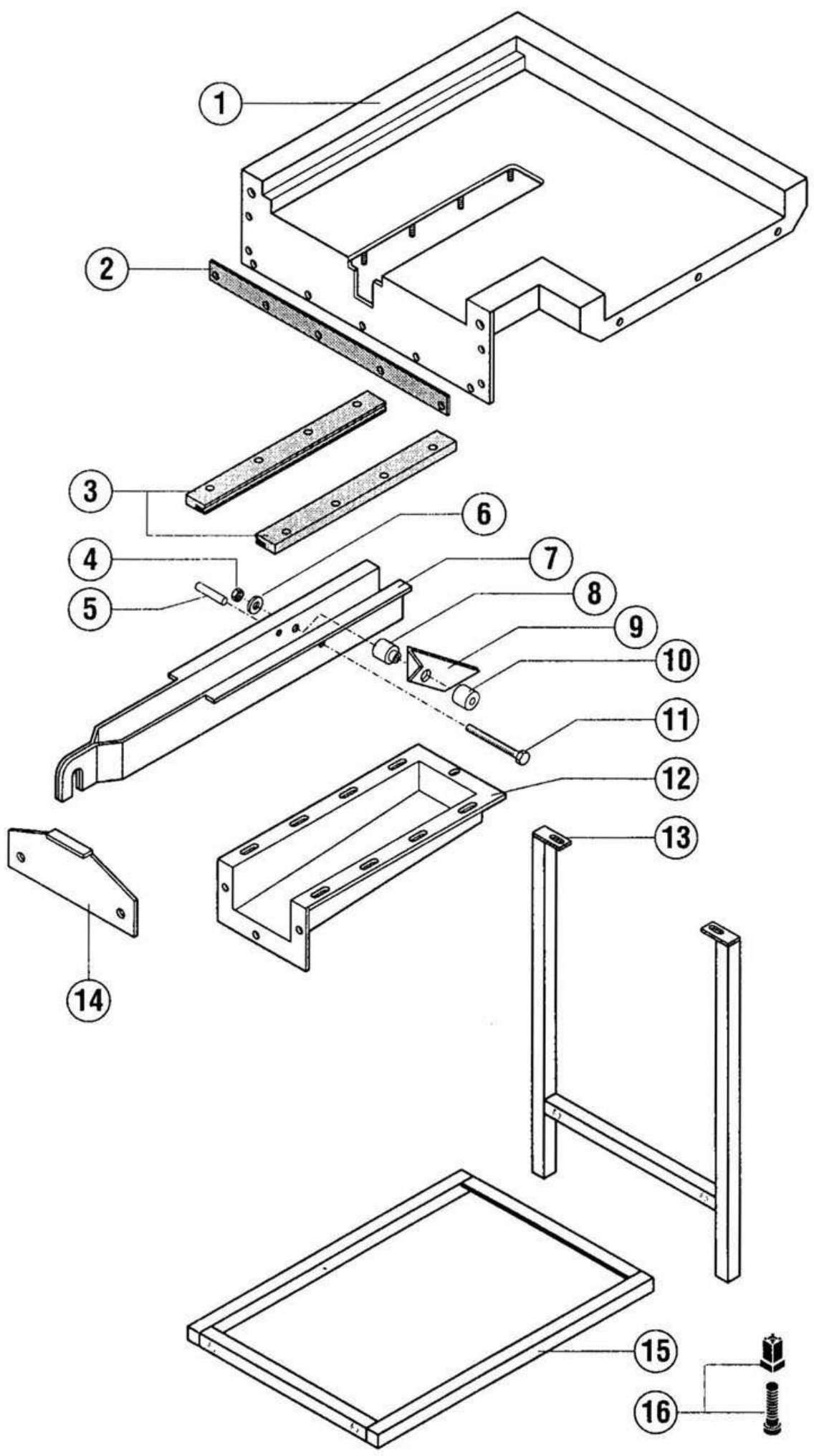


HOBART



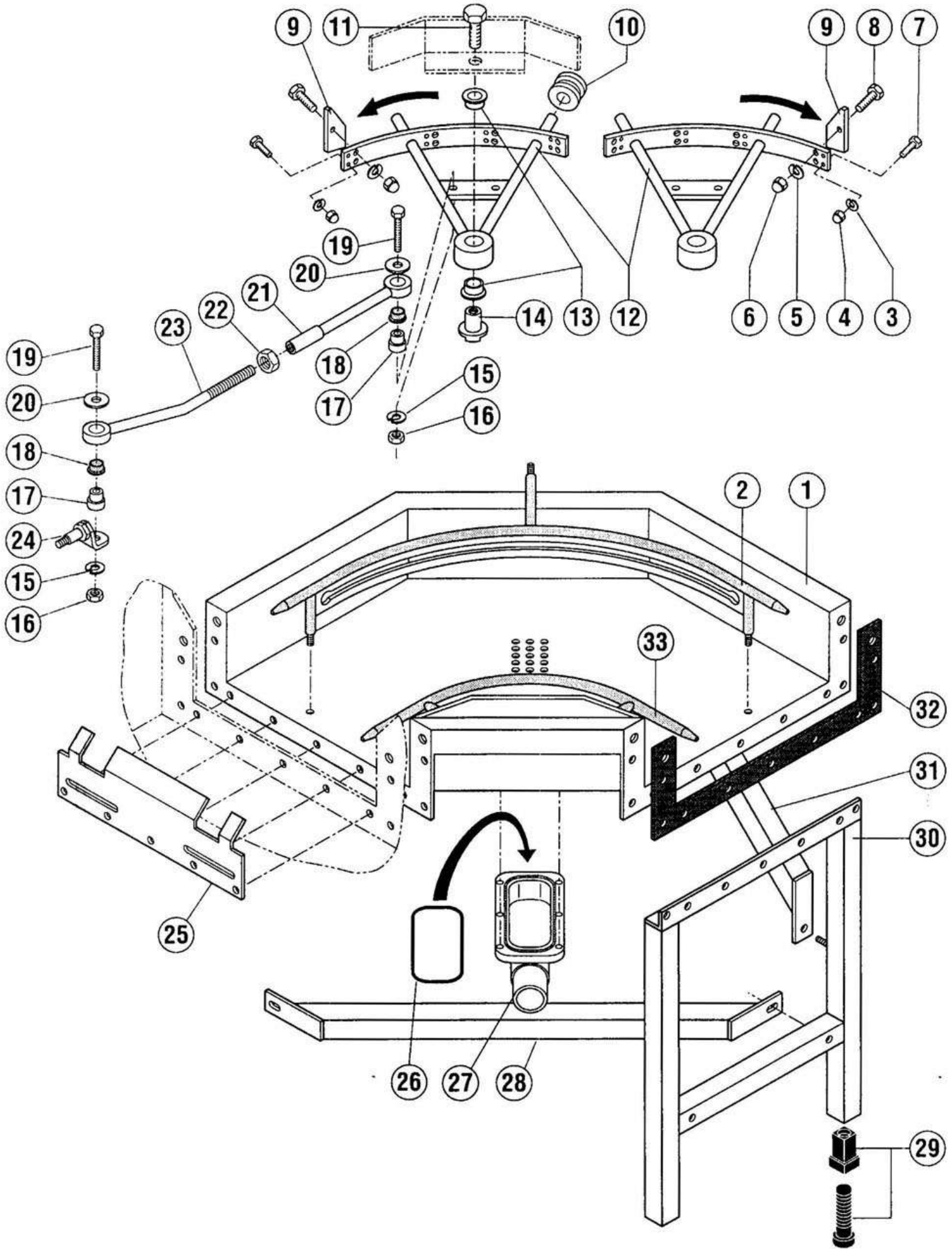
CAF
CTC 90
CTC 180



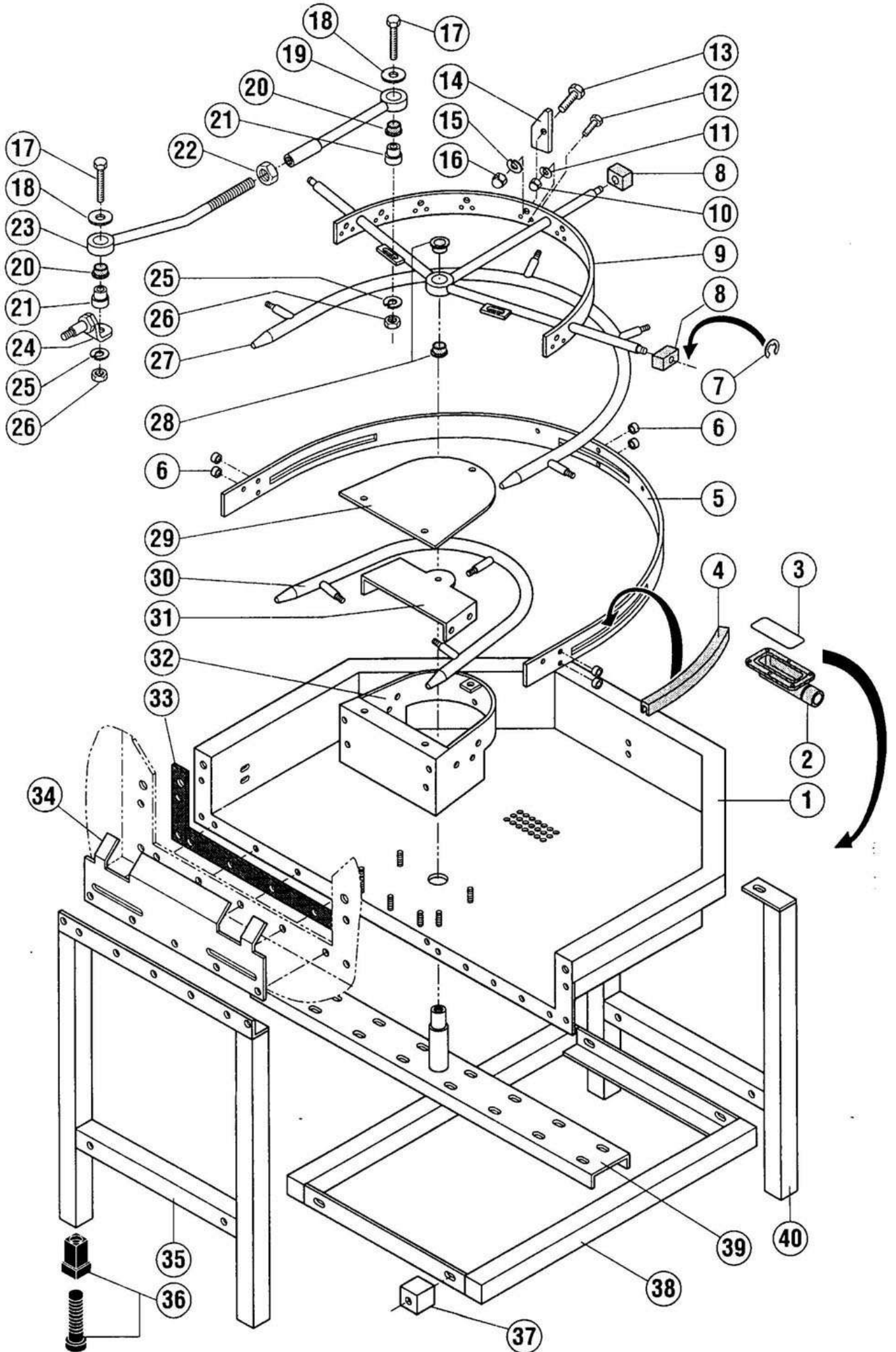
HOBART

CAF

Pos.	L/R G/D	R/L D/G	Specifications / Spécification / Angaben / Opgaven
1	734 940-1	734 943-1	
2	168 834-9	=	
3	734 945-1	=	2x
4	602 502	=	M6
5	734 957-1	=	
6	602 286	=	B6
7	734 937-1	=	
8	734 944-1	=	
9	734 938-1	734 938-2	
10	734 944-1	=	
11	603 355	=	M6 x 55
12	734 947-1	=	
13	371 686-27	=	
14	734 966-1	=	
15	378 747-1	=	
16	170 191	=	



Pos.	L/R G/D	R/L D/G	Specifications / Spécification / Angaben / Opgaven
1	734 975-1	=	
2	734 986-1	=	
3	602 307	=	B6
4	602 512	=	M6
5	602 305	=	B8
6	602 513	=	M8
7	602 569	=	M6 x 12
8	602 576	=	M8 x 16
9	734 981-1	=	4x
10	734 974-1	=	2x
11	602 594	=	M12 x 30
12	734 973-1	=	
13	298 963-6	=	
14	734 988-1	=	
15	602 307	=	B6
16	602 502	=	M6
17	734 993-1	=	2x
18	298 963-7	=	2x
19	602 573	=	M6 x 35
20	?	=	
21	734 990-1	=	
22	602 493	=	M10
23	734 991-1	=	
24	735 361-1	=	
25	734 207-1	=	
26	276 903-35	=	
27	325 529-1	=	
28	735 332-1	=	
29	170 191	=	
30	734 996-1	734 996-2	
31	734 962-2	=	
32	168 834-9	=	
33	734 982-1	=	



Pos.	L/R G/D	R/L D/G	Specifications / Spécification / Angaben / Opgaven
1	735 174-1	=	
2	325 529-1	=	
3	276 903-35	=	
4	735 184-1	=	
5	735 119-1	=	
6	735 187-1	=	6x
7	602 950	=	3x
8	735 183-1	=	3x
9	735 156-1	=	10x
10	602 512	=	
11	602 307	=	B6
12	602 569	=	M6 x 12
13	602 576	=	M8 x 16
14	734 981-1	=	
15	602 305	=	B8
16	602 513	=	M8
17	602 573	=	M6 x 35
18	?	=	
19	735 203-1	=	
20	298 963-7	=	2x
21	734 993-1	=	2x
22	602 493	=	M10
23	735 202-1	=	
24	735 361-1	=	
25	602 307	=	B6
26	602 502	=	M6
27	735 191-1	=	
28	298 963-6	=	2x
29	735 122-1	=	
30	735 188-1	=	
31	735 160-1	=	
32	735 120-1	=	
33	168 834-9	=	
34	735 207-1	=	
35	734 997-1	=	
36	170 191	=	4x
37	737 363-1	=	
38	735 201-1	=	
39	735 121-1	=	
40	378 935	=	